



artesanías
MONGAR S.L.

—— sistemas de poliuretano ——

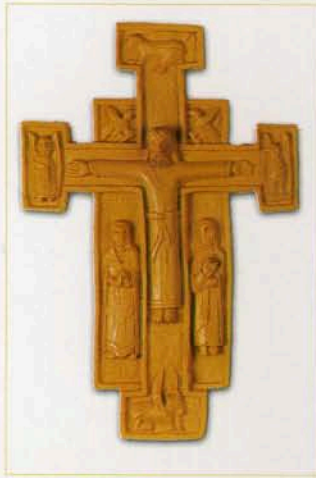


ARTESANÍAS MONGAR, S.L. es una empresa dedicada, desde 1977, exclusivamente al poliuretano.

Cada año que pasa damos a nuestros clientes mejor calidad y servicio gracias a la incorporación de nuevas tecnologías. Así mismo, incorporamos nuevos diseños en los productos dedicados a las manualidades y bellas artes. En el sector del mueble en general, fabricamos todo tipo de apliques, cascarones, molduras, etc., sin olvidar todo lo relacionado con la publicidad de empresas.

En Artesanías Mongar agradecemos a nuestros clientes la confianza e innovamos para corresponder con la atención que estos se merecen.





ref. 44

Med: an.32, al.48



ref. 45

Med: an.52, al.7



ref. 46

Med: an.17, al.42



ref. 47

Med: an.9, al.24



ref. 48

Med: an.47, al.13



ref. 49

Med: an.14, al.45



ref. 50

Med: an.32, al.32



ref. 51

Med: an.13, al.41



ref. 52

Med: an.28, al.44



ref. 53

Med: an.47,5, al.29



ref. 54

Med: an.29, al.27



ref. 55

Med: an.19, al.31



ref. 56

Med: an.19, al.31



ref. 57

Med: an.19, al.31



ref. 58

Med: an.19, al.31



ref. 60

Med: an.72, al.14



ref. 59

Med: an.18, al.48



ref. 61

Med: an.73, al.13



ref. 62

Med: an.59, al.16



ref. 63

Med: an.75, al.18



ref. 64

Med: an.59, al.25



ref. 65

Med: an.26, al.9,5



ref. 66
int Med: an.29, al.24
ext Med: an.50, al.40



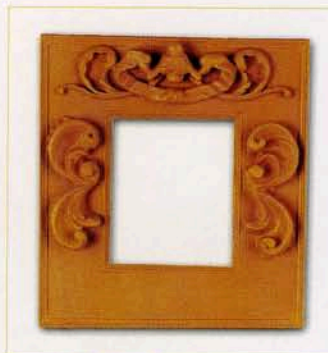
ref. 67
int Med: an.25, al.15
ext Med: an.42, al.31



ref. 68
int Med: an.23, al.19
ext Med: an.51, al.29



ref. 69
int Med: an.24, al.16
ext Med: an.51, al.36



ref. 70
int Med: an.21, al.17
ext Med: an.34, al.37



ref. 71 **MARCO**
int Med: an.25,5, al.29
ext Med: an.32, al.44



ref. 74
Med: an.24, al.26

ref. 72 **PASPARTU**
Med: an.29, al.25



ref. 73
int Med: an.32, al.46
ext Med: an.53, al.64



ref. 75
Med: an.20, al.56



ref. 76
Med: an.15, al.46



ref. 77

Med: al.30
base: an.10, al.10



ref. 78

Med: al.25
base: an.8, al.8



ref. 79

Med: al.26
base: an.13, al.13



ref. 80

Med: an.20, al.38
base: 50 x 20



ref. 81

Med: an.30, al.21



ref. 84

Med: an.20, al.28



ref. 85

Med: an.19, al.29



ref. 82

Med: an.20, al.68



ref. 83

Med: an.19, al.75



ref. 86

Med: an.19, al.29



ref. 87

Med: an.31, al.19



ref. 88

Med: an.38, al.19



ref. 89

Med: an.12, al.12



ref. 90

Med: an.40, al.26



ref. 91

int Med: an.11, al.15
ext Med: an.17, al.27



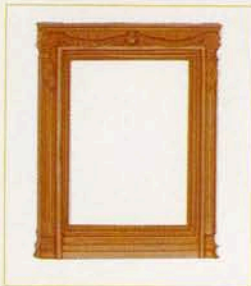
ref. 92

int Med: an.9,5, al.14
ext Med: an.16, al.24,5



ref. 93

int Med: an.12, al.16
ext Med: an.17, al.26



ref. 94

int Med: an.13, al.16
ext Med: an.18, al.21,5



ref. 96

Med: al.22
base: an.10, al.11



ref. 97

Med: an.17, al.40



ref. 95

Med: an.15, al.39



ref. 99

Med: an.22, al.26



ref. 98

Med: an.10, al.13





ref. 100

Med: an.16, al.22



ref. 101

Med: an.13, al.16



ref. 102

Med: an.15, al.16



ref. 103

Med: an.16, al.16



ref. 131

Med: an.16, al.16



ref. 104

int Med: an.13, al.18
ext Med: an.24, al.35



ref. 105

int Med: an.15, al.18
ext Med: an.33, al.44



ref. 106

int Med: an.13, al.18
ext Med: an.17, al.25,5



ref. 107

INTERIOR

Med: an.11, al.16

ref. 108

MARCO

int Med: an.15, al.21
ext Med: an.25, al.32



ref. 109

CON TRASERA FIJA
Med: an.37, al.51

ref. 1057

SIN TRASERA
Med: an.37, al.51



ref. 110

int Med: an.22,5, al.32
ext Med: an.34, al.44



ref. 111

Med: an.15, al.8



ref. 112

Med: an.8, al.13



ref. 113

Med: an.8, al.13



ref. 114

Med: an.13, al.7



ref. 115

Med: an.12, al.10



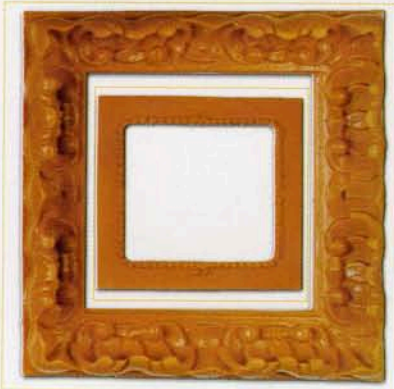
ref. 116

Med: an.8, al.15



ref. 117

Med: an.10, al.14



ref. 122

MARCO

int Med: an.25, al.24
ext Med: an.37, al.36



ref. 118

MARCO

int Med: an.43, al.21,5
ext Med: an.47,5, al.31



ref. 120

MARCO

int Med: an.22,5, al.39,5
ext Med: an.30, al.54

ref. 123

PASPARTU

Med: an.24,5, al.24

ref. 119

PASPARTU

Med: an.41,5, al.20

ref. 121

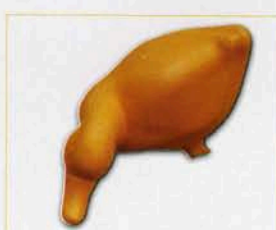
PASPARTU

Med: an.22,5, al.38,5



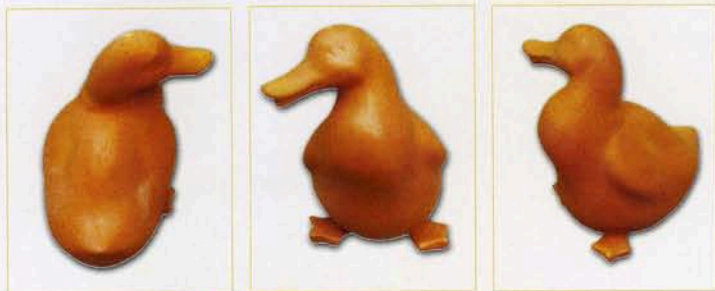
ref. 125

Med: largo.50
base: an.21, al.20



ref. 128

Med: largo. 23
base: an.13, al.16



ref. 129

Med: an.11, al.21
base: an.11, al.8



ref. 130

Med: an.13, al.14,5



ref. 132

Med: an.26, al.35
base: an.21, al.26



ref. 133

Med: an.22, al.16



ref. 134

Med: an.63, al.17



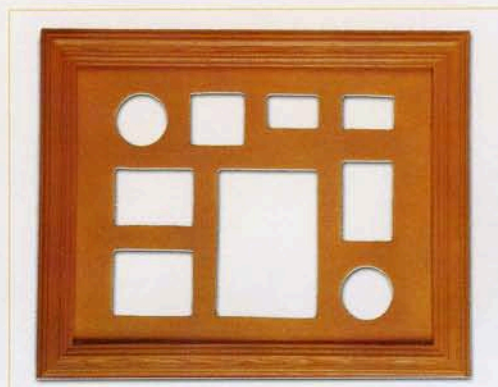
ref. 136

Med: an.22, al.11
base: 22 x 13



ref. 135

Med: an.63, al.20



MARCO

ref. 138

int Med: an.41, al.32
ext Med: an.47,5, al.38,5

CENTRO PASPARTU

ref. 139

Med: an.41, al.32



ref. 140

Med: an.21, al.10
base: 20 x 12



ref. 141

Med: an.10, al.47,5



ref. 142

Med: an.42, al.11



ref. 143

Med: an.40, al.10



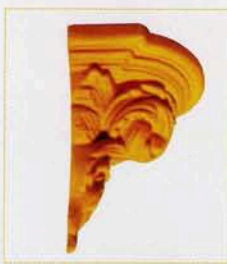
ref. 144

Med: an.50, al.9



ref. 147

Med: an.23, al.41
Fondo: 4



ref. 145

Med: an.12, al.17
base:11 x 14



ref. 149 A

Med: an.17, al.21



ref. 149

Med: an.44, al.21



ref. 150

Med: an.47, al.27
FONDO: 23,5



ref. 151

Med: an.90, al.54

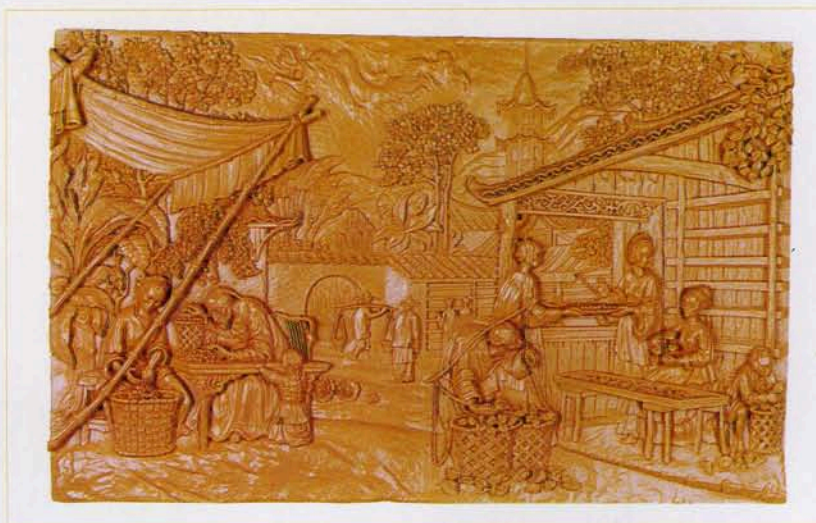


ref. 151 A

Med: an.45, al.54
TRASERA FIJA

ref. 1056

Med: an.45, al.54
SIN TRASERA



ref. 153

Med: an.94, al.60
ENTERO

ref. 153 A

Med: an.47, al.30
PARTIDO



ref. 156

Med: an.29, al.53



ref. 157

Med: an.53,5, al.57



ref. 158

Med: an.32, al.24,5



ref. 160

Med: an.14, al.38



ref. 162

Med: an.25, al.30



ref. 163

Med: an.18, al.30



ref. 165

Med: an.28, al.30

ref. 161

Med: an.11,5, al.16
10 TEMAS



ref. 164

Med: an.24, al.30



ref. 166

Med: an.24, al.27



ref. 167

Med: an.14, al.69



ref. 168

Med: an.21, al.45
base: 15 x 10



ref. 169

Med: an.6, al.17



ref. 170

Med: an.20, al.71



ref. 171

Med: an.14, al.51



ref. 172

Med: an.14, al.51



ref. 175

int Med: an.13, al.17,5
ext Med: an.21, al.25



ref. 173

Med: an.30, al.44



ref. 174

Med: an.7, al.25
base: 15 x 7



ref. 176

int Med: an.12, al.18
ext Med: an.19, al.24



ref. 177

Med: an.36, al.28
base: 16 x 15



ref. 178

Med: an.16, al.30



ref. 179

Med: an.20, al.30



ref. 180

Med: an.12, al.22



ref. 181

Med: an.8, al.21



ref. 182

Med: an.9, al.20



ref. 183

Med: al.11
base: an.10, al.6



ref. 184

Med: an.15, al.22



ref. 185

int Med: an.9, al.11
ext Med: an.13, al.16



ref. 186

int Med: an.11, al.15
ext Med: an.17, al.21



ref. 187

Med: an.15, al.20
largo: 39



ref. 188

int Med: an.13, al.17
ext Med: an.20, al.25



ref. 189

int Med: an.9, al.13
ext Med: an.17, al.20



ref. 190

int Med: an.15,5, al.24,5
ext Med: an.35, al.51



ref. 191

int Med: an.19, al.24
ext Med: an.26, al.30



ref. 192

int Med: an.19, al.25
ext Med: an.23, al.29



ref. 197

Med: an.17, al.5



ref. 198

Med: an.14, al.7



ref. 200

Med: an.20, al.34



ref. 201

Med: ø 24



ref. 202

Med: ø 24



ref. 203

Med: ø 24



ref. 204

Med: ø 24



ref. 205

Med: ø 24



ref. 208

Med: an.14, al.19
base: 8 x 21



ref. 209

Med: an.20, al.22



ref. 210

Med: an.16, al.23



ref. 211

Med: an.15, al.16



ref. 212

Med: an.37, al.45



ref. 213

int Med: an.14, al.19,5
ext Med: an.28, al.34



ref. 214

Med: an.17, al.19
base: 19 x 11



ref. 215

Med: an.23, al.29



ref. 216

Med: an.13, al.42



ref. 219

Med: an.17, al.36



ref. 217

Med: an.15, al.17



ref. 218

Med: an.12, al.21



ref. 220

Med: an.10, al.12



ref. 221

Med: an.9, al.12



ref. 227

Med: an.31, al.70



ref. 222

Med: an.9, al.22



ref. 223

Med: an.12, al.24



ref. 224

Med: an.14, al.22



ref. 225

Med: an.16, al.30



ref. 228

Med: an.22, al.10



ref. 229

Med: an.27, al.7



ref. 230

Med: an.40, al.24



ref. 231

Med: an.31, al.18

ref. 230 P

CON 4 POMOS



ref. 232

Med: ø 37

ref. 232 P

CON 4 POMOS



ref. 235

Med: an.21, al.28



ref. 236

Med: an.15, al.39



ref. 237

Burro: al.12, base 15 x 7
 Virgen: al.17, base 11 x 8
 Niño: al.5, base 10 x 6,5
 S.José: al.23, base 8 x 9
 Buey: al.10, base 14 x 8



ref. 240

Med: an.40, al.19



ref. 239

int Med: an.10, al.14
 ext Med: an.20, al.27



ref. 243

Med: an.42, al.18

ref. 243 P

CON 4 POMOS



ref. 238

Med: ø 19
 int: an.8,5, al.8,5



ref. 245

OPCIONAL

Med: an.41, al.31



ref. 244

Med: an.31, al.18



ref. 1057

int Med: an.33, al.41
 ext Med: an.37, al.51

INTERIOR OPCIONAL



ref. 248

int Med: an.18, al.24
 ext Med: an.29, al.35



ref. 241

Med: an.40, al.27



ref. 273

OPCIONAL

Med: an.40, al.32



ref. 249

int Med: an.13, al.18
 ext Med: an.24, al.28



ref. 250

Med: an.22, al.29



ref. 251

Med: an.22, al.29



ref. 252

Med: an.23, al.30



ref. 253

Med: an.16, al.17
base: 8 x 15



ref. 254

Med: an.22, al.17



ref. 255

Med: an.20, al.20



ref. 256

Med: an.20, al.20



ref. 258

Med: an.40, al.13



ref. 259

Med: an.60, al.17



ref. 261

Med: an.18, al.19



ref. 257

int Med: an.10, al.13
ext Med: an.17, al.28



ref. 260

Med: an.15, al.16
base: 16 x 11



ref. 262

Med: an.15, al.18



ref. 263

Med: an.18, al.18



ref. 264

Med: an.16, al.36



ref. 265

Med: an.19, al.36



ref. 266

Med: an.20, al.25



ref. 267

Med: an.20, al.25



ref. 268

Med: an.19, al.79



ref. 269

Med: an.28, al.16



ref. 270

Med: an.70, al.38



ref. 272

Med: an.70, al.38



ref. 271

Med: an.13, al.13



ref. 277

Med: an.13, al.11



ref. 274

Med: an.10, al.21



ref. 275

Med: an.11, al.23



ref. 276

Med: an.28, al.36



ref. 278

Med: an.13, al.9



ref. 279

int Med: an.24,5, al.30,5
ext Med: an.30, al.40



ref. 280

int Med: an.16, al.21
ext Med: an.26, al.36



ref. 281

int Med: an.11, al.15
ext Med: an.17, al.24



ref. 286

Med: an.20, al.4,5



ref. 284

Med: an.27, al.31



ref. 285

int Med: an.20, al.25
ext Med: an.32, al.48



ref. 282

int Med: an.19, al.25
ext Med: an.33, al.48

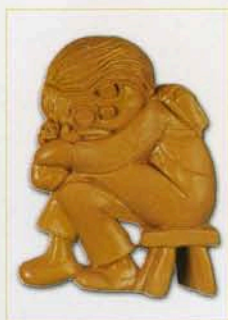
ref. 283

int Med: an.24, al.31
ext Med: an.38, al.59



ref. 287

Med: an.17, al.24



ref. 288

Med: an.17, al.24



ref. 290

Med: an.18, al.68



ref. 289

Med: an.24, al.68



ref. 291

Med: an.38, al.29



ref. 292

Med: an.32, al.29



ref. 294

int Med: an.10, al.13
ext Med: an.13, al.18



ref. 293

Med: an.18, al.75



ref. 295

int Med: an.13, al.18
ext Med: an.16, al.24



ref. 296

Med: an.20, al.23



ref. 297

int Med: an.11, al.13
ext Med: an.18, al.21



ref. 298

Med: an.22, al.28



ref. 301

Med: an.17, al.53



ref. 300

Med: an.24, al.80



ref. 302

int Med: an.11, al.12
ext Med: an.28, al.35



ref. 303

Med: an.56, al.26
base: 56 x 19



ref. 307

int Med: an.14, al.20
ext Med: an.27, al.33



ref. 304

Med: an.94, al.29



ref. 305

Med: an.13, al.29
base: 13 x13



ref. 310

int Med: an.24, al.30
ext Med: an.30, al.37



ref. 308

Med: an.96, al.30



ref. 309

Med: an.42, al.24



ref. 311

Med: 17x11x11



ref. 313

Med: an.50, al.29

ref. 313 P

CON 4 POMOS



ref. 312

Med: 16x11x11



ref. 314

Med: an.34, al.36

ref. 314 P

CON 3 POMOS



ref. 316

Med: an.23, al.34

ref. 317

Med: an.18, al.11

ref. 318

Med: an.7, al.11



ref. 319

Med: an.10, al.18



ref. 315

Med: an.42, al.28

ref. 315 P

CON 3 POMOS



ref. 320

Med: an.9, al.17



ref. 324

Med: an.20, al.22



ref. 321

Med: an.27, al.37



ref. 322

Med: an.22, al.28



ref. 323

Med: an.8, al.8



ref. 325

Med: an.55, al.30



ref. 326

Med: an.20, al.25



ref. 327

Med: an.17, al.25



ref. 328

Med: an.17, al.25



ref. 329

Med: an.17, al.19



ref. 331

Med: an.14, al.23



ref. 332

Med: an.14, al.23



ref. 330

Med: an.32, al.45

ref. 331P

CON 2 POMOS

ref. 332 P

CON 2 POMOS



ref. 333

Med: an.14, al.23



ref. 334

Med: an.14, al.20



ref. 335

Med: an.21, al.32

ref. 333 P

CON 2 POMOS

ref. 334 P

CON 2 POMOS



ref. 338

Med: an.19, al.22



ref. 336

int Med: an.21, al.25
ext Med: an.32, al.37



ref. 337

Med: an.19, al.23



ref. 339

Med: an.19, al.21



ref. 340

Med: an.27, al.35



ref. 341

Med: an.28, al.44



ref. 342

Med: an.20, al.50



ref. 344

int Med: an.20, al.29
ext Med: an.25, al.35



ref. 343

int Med: ø 16
ext Med: an.22, al.34



ref. 345

Med: an.20, al.35



ref. 346

int Med: an.23, al.30
ext Med: an.29, al.36



ref. 347

Med: an.23, al.45
base: 20 x 22



ref. 348

int Med: an.24, al.29
ext Med: an.35, al.53



ref. 349

Med: an.13, al.25



ref. 350

int Med: ø 34
ext Med: an.46, al.58



ref. 350 A

Med: ø 34

INTERIOR OPCIONAL



ref. 350 B

Med: ø 34



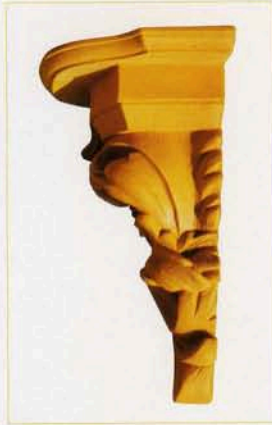
ref. 1005

Med: an.54, al.16



ref. 355

Med: an.32, al.43
base: 22 x 32



ref. 354

Med: an.21, al.16



ref. 357

Med: an.100, al.30



ref. 356

Med: an.35, al.47



ref. 358

int Med: an.14, al.32
ext Med: an.20, al.39



ref. 359

Med: an.22, al.29



ref. 360

Med: an.27, al.31



ref. 361

Med: an.15, al.30



ref. 362

Med: an.15, al.31



ref. 363

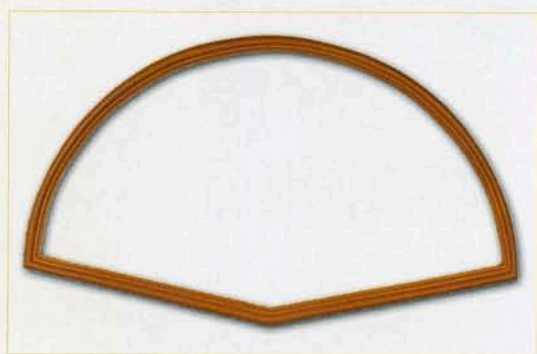
int Med: an.14, al.20
ext Med: an.25, al.31



ref. 364



Med: an.27, al.16
base: 12 x 27



ref. 365

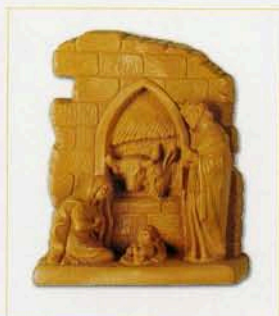
int Med: an.34, al.61
ext Med: an.37, al.63

SIN TRASERA



ref. 367

int Med: an.21, al.27
ext Med: an.23, al.36



ref. 368

Med: an.20, al.24



ref. 370

Med: an.20, al.32



ref. 371
int Med: ø 21
ext Med: an.35, al.60



ref. 372
int Med: ø 20
ext Med: an.28, al.55



ref. 373
int Med: ø 21
ext Med: an.40, al.63

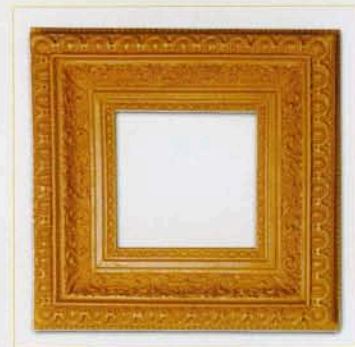
INTERIOR OPCIONAL



ref. 375
int Med: an.23, al.23
ext Med: an.32, al.32



ref. 374
Med: ø 21



ref. 376
int Med: an.20, al.20
ext Med: an.38, al.38



ref. 377
Med: an.48, al.52
base: 22 x 48



ref. 378
Med: an.34, al.48
base: 20 x 34





ref. 379

Med: an.40, al.28



ref. 380

Med: an.37, al.30



ref. 381

Med: an.40, al.26



ref. 382

Med: an.26, al.26



ref. 383

Med: an.25, al.25



ref. 384

Med: an.25, al.25



ref. 385

Med: an.22, al.23



ref. 386

int Med: an.13, al.9,5
ext Med: an.17, al.14



ref. 387

int Med: an.11, al.15
ext Med: an.19, al.28



ref. 388

int Med: ø 8
ext Med: an.14, al.26



ref. 389

int Med: an.10, al.14
ext Med: an.15, al.22



ref. 392

int Med: an.13, al.18
ext Med: an.18, al.24



ref. 391

int Med: an.9, al.13,5
ext Med: an.14, al.18,5



ref. 393

int Med: an.9, al.13
ext Med: an.14,5, al.24



ref. 390

int Med: an.7, al.9
ext Med: an.13, al.20



ref. 394

int Med: an.24,5, al.18,5
ext Med: an.26, al.27



ref. 395

int Med: an.10,4, al.14
ext Med: an.19, al.24

ref. 396

int Med: an.14, al.18
ext Med: an.21, al.28



ref. 397

Med: an.20, al.97



ref. 398

int Med: ø 19
ext Med: an.27, al.82



ref. 399

int Med: ø 27
ext Med: an.34, al.80



ref. 400

Med: an.15, al.44
base: 15 x 19



ref. 401

Med: an.60, al.30



ref. 404



Med: al.19
base: an.12, al.21



ref. 403



Med: al.21
base: an.12, al.18



ref. 405

int Med: an.32, al.44
ext Med: an.40, al.64



ref. 406

int Med: an.20, al.34
ext Med: an.34, al.66



ref. 407

int Med: an.24, al.44
ext Med: an.40, al.68



ref. 408

Med: an.22, al.90
base: an.20, al.22



ref. 409

Med: an.26, al.84
base: an.24, al.26



ref. 410

Med: an.18,5, al.8,5



ref. 411

Med: an.25, al.7,5



ref. 412

Med: an.25, al.63
 inf Med: an.14, al.21
 sup Med: an.13,5, al.15



ref. 413

int Med: ø 10
 ext Med: ø 21



ref. 414

int Med: ø 8
 ext Med: ø 15



ref. 416

int Med: an.25,5, al.37,5
 ext Med: an.30, al.47



ref. 417

int Med: an.14,5, al.20
 ext Med: an.26, al.39



ref. 415

int Med: an.13, al.26
 ext Med: an.19, al.42



ref. 421

int Med: an.9, al.12,5
 ext Med: an.15, al.20



ref. 420

int Med: an.7,5, al.12,5
 ext Med: an.14, al.25



ref. 419

int Med: ø 9,5
 ext Med: an.15, al.24



ref. 421 B

int Med: an.13, al.18
 ext Med: an.21, al.24



ref. 422 A Med: an.37, al.52



ref. 422 B Med: an.37, al.52



ref. 423

Med: an.19, al.27
base: 10 x 19



ref. 424 Med: an.12, al.47



ref. 425 Med: an.20, al.23



ref. 426 Med: an.20, al.24



ref. 427 Med: an.20, al.41



ref. 428 Med: an.18, al.40



ref. 429 Med: an.20,5, al.29



ref. 430
431 Med: an.14, al.19



ref. 430
430 Med: an.14, al.21



ref. 432

Med: an.89, al.53



ref. 433

Med: an.89, al.53



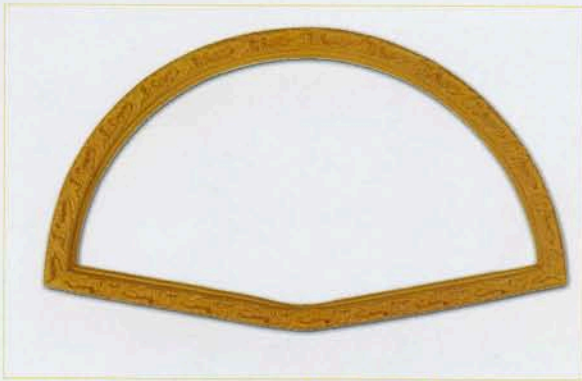
ref. 434

Med: an.89, al.53



ref. 435

Med: an.89, al.53



ref. 436

int Med: an.58,5, al.34
ext Med: an.63, al.38,5

SIN TRASERA



ref. 438

int Med: ø 8
ext Med: an.14,5, al.25



ref. 439

int Med: an.9,5, al.12
ext Med: an.18, al.22

ref. 437

int Med: an.27, al.49
ext Med: an.31, al.54

SIN TRASERA



ref. 441

Med: an.34, al.7



ref. 440

int Med: ø 11
ext Med: ø 24



ref. 443

int Med: an.10, al.15
ext Med: an.14, al.18



ref. 445

int Med: an.14, al.17
ext Med: an.22, al.25



ref. 442

Med: an.11, al.10

ref. 444

int Med: an.13, al.18
ext Med: an.17, al.22,5



ref. 448

int Med: an.14, al.18
ext Med: an.20, al.25



ref. 446

int Med: an.36, al.13
ext Med: an.42, al.22



ref. 447

int Med: an.14, al.28
ext Med: an.17, al.35



ref. 449

int Med: an.10, al.15
ext Med: an.14, al.20



ref. 450

int Med: an.17, al.13
ext Med: an.22, al.17,5



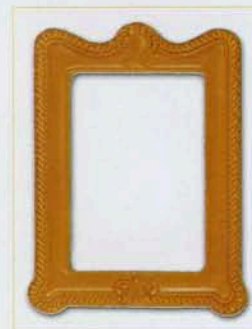
ref. 451

int Med: an.13,5, al.18
ext Med: an.15, al.22



ref. 452

int Med: an.40,5, al.30,5
ext Med: an.51, al.41



ref. 453

int Med: an.13, al.18
ext Med: an.17, al.24



ref. 454

int Med: an.13, al.18
ext Med: an.17, al.22,5



ref. 455

Med: an.25, al.23
base: 15 x 23



ref. 459

INTERIOR

int Med: an.15, al.31,5
ext Med: an.21,5, al.48



ref. 456

Med: an.25, al.12



ref. 457

Med: an.5, al.13



ref. 458

int Med: an.32, al.26
ext Med: an.49, al.43

ref. 460

MARCO

int Med: an.23, al.50
ext Med: an.43, al.87,5



ref. 461

Med: la.32, al.12

Med: fondo. 22



ref. 462

int Med: an.8, al.10

ext Med: an.12, al.22



ref. 463

Med: an.110, al.20

ref. 463 POMOS



ref. 464

int Med: ø 18

ext Med: an.28, al.28



ref. 465 A

Med: ø 18



ref. 466

Med: an.22, al.15

INTERIOR OPCIONAL



ref. 468

Med: an.11, al.75



ref. 465 B

Med: ø 18



ref. 467

Med: an.28, al.17



ref. 469

Med: an.35, al.63



ref. 472

int Med: an.7, al.9
ext Med: an.15, al.17



ref. 473

int Med: an.4, al.9,5
ext Med: an.7, al.18,5



ref. 474

int Med: an.7, al.7
ext Med: an.13,5, al.13,5



ref. 475 A

Med: an.18, al.35



ref. 475 B

Med: an.18, al.35



ref. 476

Med: an.20, al.22



ref. 477

Med: an.12, al.19



ref. 478

Med: an.23, al.23



ref. 479

Med: an.25, al.22



ref. 480

int Med: an.20, al.42
ext Base: 22 x 20



ref. 482

int Med: an.15, al.15
ext Med: an.23, al.42



ref. 481

Med: an.16, al.32
Base: 20 x 16



ref. 483

ref. 483 P CON 4 POMOS

int Med: an.22, al.20
ext Med: an.60, al.38



ref. 484

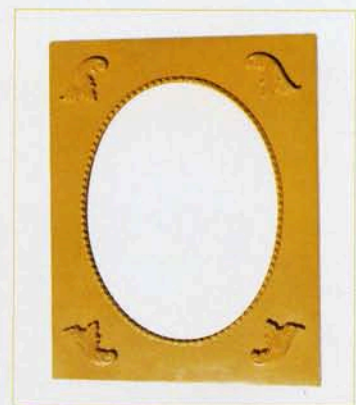
Med: ø 33



ref. 486

int Med: an.24, al.30
ext Med: an.38, al.44

INTERIOR OPCIONAL



ref. 487

Med: an.24, al.30



ref. 488

int Med: an.13, al.18
ext Med: an.17, al.22



ref. 489

int Med: an.24, al.30
ext Med: an.28, al.34



ref. 490

Med: an.90, al.32



ref. 491

Med: an.76, al.36



ref. 492

int Med: an.10, al.13
ext Med: an.18, al.21



ref. 493

int Med: an.11, al.16
ext Med: an.19, al.24



ref. 494

int Med: an.19, al.24
ext Med: an.26, al.31



ref. 495

int Med: ø9
ext Med: ø 14



ref. 496

int	Med: ø 9
ext	Med: ø 17



ref. 497

int	Med: an.9, al.13
ext	Med: an.19, al.23



ref. 498

int	Med: ø 9
ext	Med: an.15, al.15



ref. 499

int	Med: ø 12
ext	Med: an.21, al.21



ref. 500

int	Med: an.9, al.13
ext	Med: an.21, al.23



ref. 501

int	Med: an.13, al.18
ext	Med: an.19, al.27



ref. 502

int	Med: an.20, al.13
ext	Med: an.24, al.22



ref. 503

int	Med: an.9, al.13
ext	Med: an.13, al.16



ref. 504

int	Med: an.13, al.18
ext	Med: an.18, al.22



ref. 505

int Med: an.16, al.19
ext Med: an.24, al.31



ref. 506

int Med: an.40, al.9
ext Med: an.44, al.14



ref. 507

int Med: an.9, al.13
ext Med: an.13, al.17



ref. 508

int Med: an.13, al.18
ext Med: an.17, al.22



ref. 509

int Med: an.9, al.13
ext Med: an.13, al.17



ref. 511

int Med: an.9, al.13
ext Med: an.13, al.17



ref. 512

int Med: an.13, al.18
ext Med: an.17, al.22



ref. 510

int Med: an.13, al.18
ext Med: an.17, al.22



ref. 513

int Med: an.9, al.13
ext Med: an.13, al.17



ref. 514

int Med: an.13, al.18
ext Med: an.17, al.22



ref. 515

int Med: an.11, al.16
ext Med: an.17, al.22



ref. 516

int Med: an.9, al.13
ext Med: an.13, al.18



ref. 517

int Med: an.13, al.18
ext Med: an.17, al.22



ref. 518

int Med: an.14, al.18
ext Med: an.18, al.22



ref. 519

int Med: an.13, al.18
ext Med: an.17, al.24



ref. 520

int Med: an.11, al.15
ext Med: an.14, al.19



ref. 521

int Med: an.9, al.13
ext Med: an.14, al.17



ref. 522

int Med: an.9, al.13
ext Med: an.14, al.20



ref. 523

int Med: an.9, al.13
ext Med: an.12, al.16



ref. 524

int Med: an.13, al.18
ext Med: an.20, al.27



ref. 525

int Med: an.13, al.18
ext Med: an.19, al.28



ref. 526

int Med: an.9, al.13
ext Med: an.14, al.17



ref. 527

int Med: an.14, al.19
ext Med: an.18, al.23



ref. 528

int Med: an.10, al.15
ext Med: an.16, al.23



ref. 529

int Med: an.10, al.13
ext Med: an.13, al.16



ref. 530

int Med: an.13, al.18
ext Med: an.17, al.22



ref. 531

int Med: an.17, al.10
ext Med: an.22, al.15



ref. 532

int Med: an.21, al.13
ext Med: an.27, al.19



ref. 540

Med: an.64, al.16



ref. 542

Med: an.27, al.12



ref. 541

Med: an.48, al.13



ref. 544



Med: an.22, al.30
base: 19 x 30



ref. 543

Med: an.20, al.20



ref. 545

int Med: an.13, al.25
ext Med: an.19, al.40



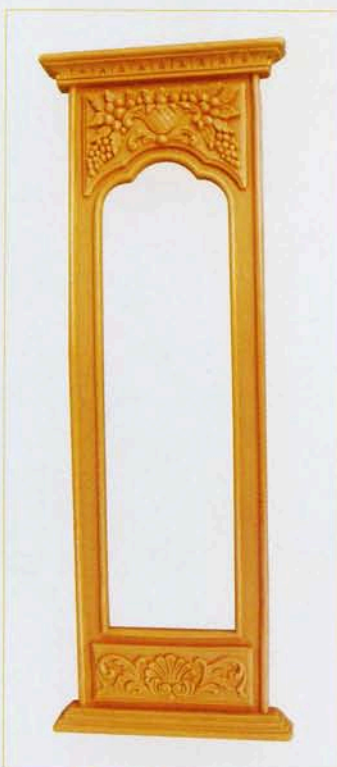
ref. 546

Med: an.30, al.14



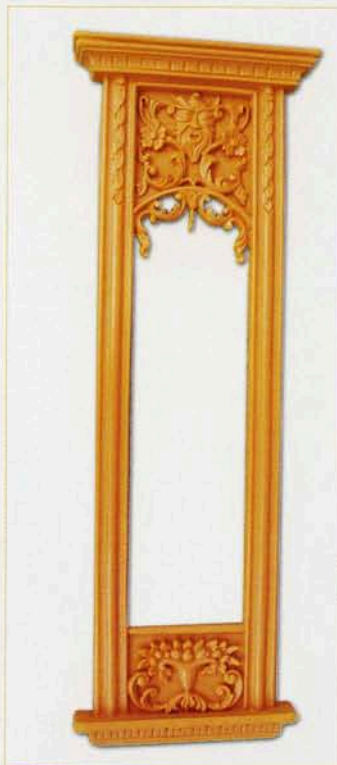
ref. 547

Med: an.19, al.40



ref. 548

int Med: an.18, al.61
ext Med: an.30, al.85



ref. 549

int Med: an.17, al.56
ext Med: an.30, al.87



ref. 550



Med: an.11, al.10
base: 10 x 9



ref. 551

Med: an.8, al.7
base: 7 x 7



ref. 552

int Med: ø 21
ext Med: ø 43



ref. 553

int Med: ø 17
ext Med: ø 23



ref. 554

int Med: ø 8
ext Med: ø 15



ref. 555

int Med: an.8, al.11
ext Med: an.12, al.23



ref. 556

int Med: an.8, al.10
ext Med: an.13, al.22



ref. 557

int Med: an.9, al.11
ext Med: an.14, al.21



ref. 558

int Med: an.5, al.9
ext Med: an.9, al.14



ref. 559

int Med: an.8, al.12
ext Med: an.11, al.17



ref. 560

Med: an.18, al.9



ref. 561

int Med: ø 22
ext Med: an.32, al.46



ref. 563

Med: an.65, al.16



ref. 564

Med: an.70, al.18



ref. 565

Med: an.73, al.15



ref. 566

int Med: an.18, al.24
ext Med: an.30, al.42



ref. 562

int Med: an.15, al.14
ext Med: an.39, al.25



ref. 567

int Med: an.18, al.23
ext Med: an.30, al.58



ref. 569

int Med: an.12, al.22
ext Med: an.16, al.73



ref. 568

int Med: an.13, al.28
ext Med: an.25, al.42



ref. 570

Med: an.20, al.68



ref. 571
int Med: an.18, al.30
ext Med: an.31, al.85



ref. 572
Med: an.78, al.16



ref. 573
int Med: an.18, al.30
ext Med: an.30, al.62



ref. 574 **MARCO**
ext Med: an.26, al.88
int-sup Med: an.15, al.15
int-inf Med: an.15, al.51



ref. 575
int Med: an.12, al.22
ext Med: an.24, al.66



ref. 579 A

Med: an.11, al.40



ref. 576

int Med: an.30, al.30
ext Med: ø 60



ref. 577

int Med: an.19, al.17
ext Med: ø 40



ref. 579 C

Med: an.21, al.40



ref. 578

int Med: an.34, al.45
ext Med: an.72, al.82



ref. 579 B

Med: an.11, al.40



ref. 579

Med: an.43, al.40
ABIERTO



ref. 579

Med: an.22, al.40
CERRADO



ref. 580

Med: an.34, al.35



ref. 581

Med: an.23, al.29



ref. 582

int Med: an.7, al.9
ext Med: an.13, al.21



ref. 583

int Med: an.43, al.53
ext Med: an.54, al.64



ref. 584

int Med: an.37, al.28
ext Med: an.62, al.52



ref. 585

int Med: an.25, al.34
ext Med: an.34, al.50



ref. 586

Med: an.18, al.24



ref. 587

Med: an.20, al.25



ref. 588

int Med: an.20, al.46
ext Med: an.29, al.68



ref. 588 R

Med: an.29, la.68
Med: fondo 15



ref. 588 V

Med: an.29, la.68
Med: fondo 15





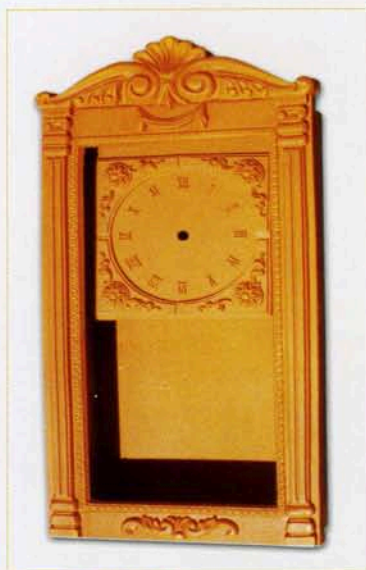
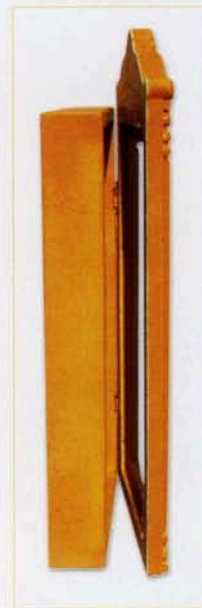
ref. 589

int Med: an.21, al.41
ext Med: an.27, al.54



ref. 589 V

Med: an.27, la.54
Med: fondo 9



ref. 589 R

Med: an.27, la.54
Med: fondo 9



ref. 591

int Med: an.14, al.17
ext Med: an.26, al.34



ref. 590

Med: an.22, al.20



ref. 592

Med: an.99, al.16

ref. 592 CON POMOS

Med: an.99, al.16



ref. 593

Med: an.56, al.13



ref. 594
Med: an.73, al.18



ref. 596
Med: an.25, al.42



ref. 595
Med: an.70, al.22,5



ref. 597
Med: an.16, al.62



ref. 598
Med: an.20, al.83



ref. 599
Med: an.17, al.73



ref. 600
Med: an.91, al.9



ref. 601
Med: an.46, al.9



ref. 602

Med: la.29, al.16
Med: fondo 11
Base: an.26, al.10



ref. 603

int Med: an.21, al.26
ext Med: an.29, al.34,5,



ref. 604

int Med: an.10, al.14
ext Med: an.15, al.19



ref. 605

int Med: an.11, al.16
ext Med: an.16, al.21



ref. 606

int Med: an.14, al.18
ext Med: an.19, al.24



ref. 607

int Med: an.9, al.13
ext Med: an.16, al.19



ref. 608

int Med: an.13, al.18
ext Med: an.20, al.24



ref. 609

int Med: an.11, al.15
ext Med: an.16, al.20



ref. 610

int Med: an.13, al.18
ext Med: an.20, al.25



ref. 611

Med: an.23, al.13



ref. 612 A

Med: an.5, al.8



ref. 612 B

Med: an.5, al.8



ref. 613

int Med: an.13, al.18
ext Med: an.22, al.34



ref. 614

int Med: an.11, al.11
ext Med: an.21, al.21



ref. 615

int Med: an.13, al.18
ext Med: an.21, al.26



ref. 616

int Med: ø 6
ext Med: an.14, al.20



ref. 617

int Med: an.9, al.11
ext Med: an.19, al.28



ref. 618

int Med: an.6, al.8
ext Med: an.15, al.20



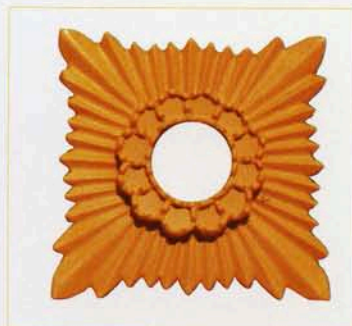
ref. 619

int Med: an.6, al.8
ext Med: an.14, al.20



ref. 620

int Med: ø 8
ext Med: ø 16



ref. 621

int Med: 8
ext Med: an.21, al.21



ref. 622

int Med: an.10, al.13
ext Med: an.16, al.20



ref. 623

int Med: an.6, al.8
ext Med: an.10, al.14



ref. 624

int Med: an.6, al.6
ext Med: an.12, al.19



ref. 625

int Med: an.10, al.12
ext Med: an.17, al.18



ref. 626

Med: an.22, al.22



ref. 629

int Med: an.16, al.67
ext Med: an.33, al.87



ref. 628

Med: an.22, al.22



ref. 627

Med: an.16, al.22



ref. 630

int Med: an.20, al.25
ext Med: an.34, al.40



ref. 631

int Med: an.15, al.20
ext Med: an.28, al.35



ref. 632

int Med: an.16, al.32
ext Med: an.29, al.43



ref. 633

Med: an.23, al.24
Fondo: 12



ref. 634

int Med: an.9, al.12
ext Med: an.14, al.18



ref. 635

int Med: an.11, al.14
ext Med: an.16, al.19



ref. 636 A

int Med: an.21, al.26
ext Med: an.25, al.38



ref. 636 B

int Med: an.13, al.18
ext Med: an.17, al.28



ref. 636 C

int Med: an.11, al.16
ext Med: an.15, al.24



ref. 637 A

int Med: an.21, al.26
ext Med: an.28, al.39



ref. 637 B

int Med: an.13, al.18
ext Med: an.18, al.26



ref. 637 C

int Med: an.11, al.16
ext Med: an.15, al.23



ref. 638 A

int Med: an.20, al.26
ext Med: an.28, al.33



ref. 638 B

int Med: an.12, al.18
ext Med: an.21, al.26



ref. 638 C

int Med: an.10, al.15
ext Med: an.17, al.22



ref. 639

int Med: ø 18
ext Med: an.32, al.37,5



ref. 640



Med: al.14
Med: ø 18



ref. 641

Med: la.29, al.13
Med: fondo 16



ref. 642

Med: la.19, al.24
Med: fondo 14



ref. 643

Med: la.29, al.13
Med: fondo 10



ref. 644

Med: an.35, al.30



ref. 645

Med: an.13, al.19,5

ref. 645 2 POMOS

Med: an.13, al.19,5



ref. 646

Med: an.20, al.12

ref. 646 3 POMOS

Med: an.20, al.12



ref. 647

Med: an.20, al.14

ref. 647 3 POMOS

Med: an.20, al.14



ref. 648

Med: an.11, al.10
Base: 10 x 6





ref. 650



Med: an. 28, al. 32
Base: 28 x 17



ref. 651



Med: an. 28, al. 33
Base: 28 x 17



ref. 652

Med: an. 35, al. 26



cubrecontador

Fondo: 10



ref. 653

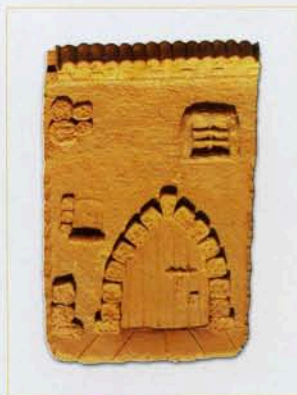
Med: an. 35, al. 26

ref. 652 C

Med: an. 35, al. 26

ref. 653 C

Med: an. 35, al. 26



ref. 654

Med: an. 20, al. 30



guarda llaves

Fondo: 8



ref. 655

Med: an. 20, al. 30

ref. 654 L

Med: an. 20, al. 30

ref. 655 L

Med: an. 20, al. 30



ref. 657

int Med: an. 30, al. 41
ext Med: an. 41, al. 51



ref. 656

Med: an.28, al.25



ref. 656 L

Med: an.30, al.38
Fondo: 7



ref. 658

Med: an.41, al.61
Fondo: 11



ref. 658 V

Med: an.41, al.61
Fondo: 11



ref. 659

Med: an.40, al.69
Fondo: 12



ref. 659 V

Med: an.40, al.69
Fondo: 12





ref. 660

Med: an.14, al.19



ref. 661

Med: an.24, al.17



ref. 662

Med: an.24, al.17



ref. 663

Med: an.24, al.17



ref. 664

Med: an.24, al.17



ref. 665

Med: an.14, al.19



ref. 666

Med: an.14, al.14



ref. 668

Med: an.14, al.10



ref. 669

Med: an.12, al.10



ref. 667

Med: an.15, al.15



ref. 670

int Med: an.11 al.11
ext Med: an.28, al.28



ref. 671

int Med: an.15,5 al.12
ext Med: an.32, al.29



ref. 672

int Med: an.24,5 al.36,5
ext Med: an.36, al.50



ref. 673

int	Med: an.22,5 al.42
ext	Med: an.35, al.71



ref. 674

int	Med: an.27,5 al.42
ext	Med: an.32, al.53



ref. 675

int	Med: an.19,5 al.27,5
ext	Med: an.26,5, al.41



ref. 676

int	Med: an.30 al.40
ext	Med: an.38, al.51



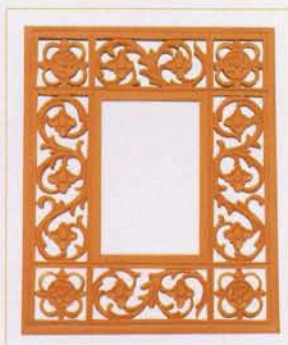
ref. 677

int	Med: ø 19
ext	Med: an.30 al.35



ref. 678

int	Med: ø 14
ext	Med: ø 25



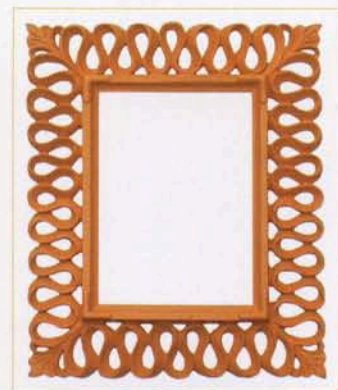
ref. 679

int	Med: an.11, al.16
ext	Med: an.23,5 al.29



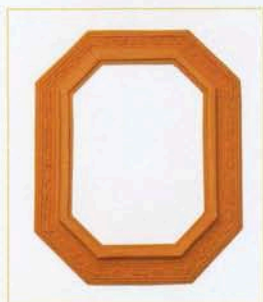
ref. 680

int	Med: an.11 al.16
ext	Med: an.19,5, al.24,5



ref. 681

int	Med: an.13 al.18
ext	Med: an.22, al.27



ref. 682

int Med: an.13,5 al.18
ext Med: an.19, al.24



ref. 683

int Med: an.13,5 al.18
ext Med: an.18, al.28



ref. 684

int Med: an.14 al.18,5
ext Med: an.18, al.22



ref. 685

int Med: an.13 al.18
ext Med: an.20, al.25



ref. 686

int Med: an.10,5 al.15,5
ext Med: an.18, al.23



ref. 687

int Med: an.10 al.10
ext Med: an.18, al.18



ref. 688

int Med: an.10,5 al.15
ext Med: an.19, al.23



ref. 689

int Med: an.11 al.15
ext Med: an.17, al.21



ref. 690

int Med: ø 9
ext Med: an.16, al.26



ref. 691

int Med: an.6,5, al.8,5
ext Med: an.12, al.15



ref. 692

ext	Med: an.18, al.9
fon	Med: 9



ref. 693

int	Med: an.10, al.15
ext	Med: an.18, al.26



ref. 694

int	Med: an.13, al.18
ext	Med: an.19, al.24



ref. 695

int	Med: an.13, al.18
ext	Med: an.22, al.27



ref. 696

int	Med: an.10, al.13
ext	Med: an.14, al.19



ref. 697

int	Med: an.11, al.14
ext	Med: an.14, al.19



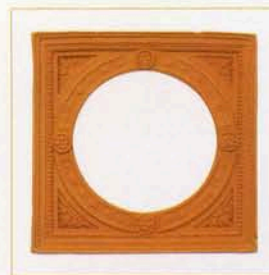
ref. 698

int	Med: ø 8,5
ext	Med: an.12, al.14



ref. 699

int	Med: an.9, al.9
ext	Med: an.12, al.12



ref. 700

int	Med: ø 9
ext	Med: an.12, al.12



ref. 701

Med: an.13, al.21
base: 13 x 11



ref. 702

Med: an.30, al.6



ref. 703

Med: an.8, al.5



ref. 704

Med: an.20, al.8



ref. 705

ref. 705 P **CON 2 POMOS**

ext Med: an.19, al.31



ref. 706

ref. 706 P **CON 3 POMOS**

ext Med: an.30, al.46



ref. 707

ref. 707 P **CON 3 POMOS**

ext Med: an.44, al.18



ref. 708

int Med: an.9,5 al.14,5
ext Med: an.17, al.22



ref. 709

int Med: an.13, al.20
ext Med: an.25,5 al.33



ref. 710

int Med: ø.8,5
ext Med: an.19, al.19



ref. 711

int Med: ø 11
ext Med: an.25, al.25



ref. 712

int Med: 9,5 al.12,5
ext Med: an.18, al.21,5



ref. 713

int Med: an.15,5 al.11
ext Med: an.21,5 al.26



ref. 714

int Med: an.18 al.28
ext Med: an.30, al.40



ref. 715

Med: an.22, al.22



ref. 716

Med: an.16, al.18



ref. 717

Med: an.16, al.18



ref. 718

Med: an.16, al.18



ref. 719

Med: an.22, al.22



ref. 720

Med: an.11, al.9



ref. 721

Med: an.16, al.14



ref. 721 V

Med: an.16, al.14



ref. 722

Med: an.10, al.10



ref. 723

Med: an.17, al.17



ref. 723 V

Med: an.27, al.27



ref. 724

Med: an.10, al.10



ref. 725

Med: an.15, al.15



ref. 725 V

Med: an.25, al.25



ref. 726

Med: an.11, al.10



ref. 727

Med: an.16, al.14



ref. 727 V

Med: an.16, al.14

accesorios no incluidos



ref. 728

ext	Med: an.10 al.10
alt	Med: 7



ref. 728 M1

ext	Med: an.10 al.10
alt	Med: 7



ref. 728 M2

ext	Med: an.10 al.10
fond	Med: 14



ref. 728 V

ext	Med: an.10 al.10
alt	Med: 7



ref. 729

ext	Med: an.8 al.7
alt	Med: 7



ref. 729 M1

ext	Med: an.8 al.7
fond	Med: 11



ref. 730

ext	Med: an.9 al.7
alt	Med: 7



ref. 730 M1

ext	Med: an.9 al.7
fond	Med: 11

accesorios no incluidos



ref. 731

ext	Med: an.12 al.10
alt	Med: 7



ref. 731 M1

ext	Med: an.12 al.10
alt	Med: 7



ref. 731 M2

ext	Med: an.12 al.10
fond	Med: 17



ref. 732

ext	Med: an.10 al.10
alt	Med: 7



ref. 732 M1

ext	Med: an.10 al.10
fond	Med: 12



ref. 731 V

ext	Med: an.12 al.10
alt	Med: 7



ref. 733

ext	Med: an.15 al.9
fond	Med: 7



ref. 734

ext	Med: an.18 al.6
fondo	Med: 18

accesorios no incluidos



ref. 734 S
 ext Med: an.18 al.18
 fondo Med: 18



ref. 734 A
 ext Med: an.28 al.18
 fondo Med: 18



ref. 734 M
 ext Med: an.18 al.6
 fondo Med: 18



ref. 734 V
 ext Med: an.18 al.6
 fondo Med: 18

accesorios no incluidos



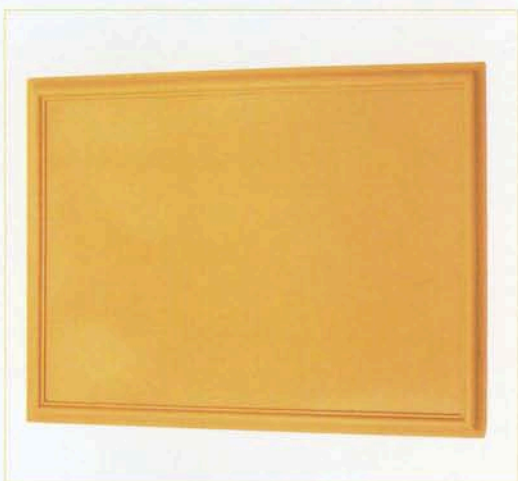
ref. 735
 Med: an.34, al.44



ref. 735 A
 Med: an.30, al.40

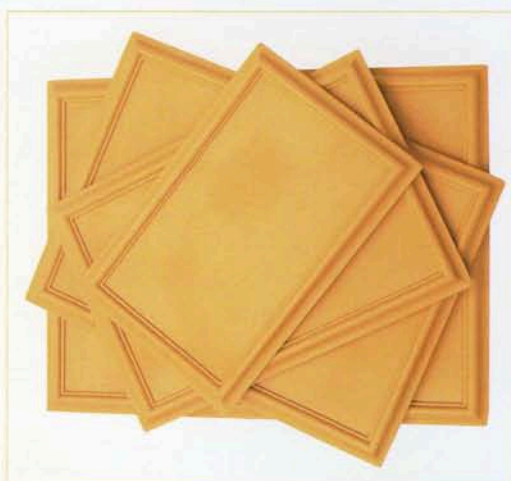
ref. 735 B
 Med: an.24, al.34

ref. 735 C
 Med: an.20, al.30



ref. 736

Med: an.34, al.44



ref. 736 A

Med: an.30, al.40

ref. 736 B

Med: an.24, al.34

ref. 736 C

Med: an.20, al.30



ref. 737

Med: an.34, al.44



ref. 737 A

Med: an.30, al.40

ref. 737 B

Med: an.24, al.34

ref. 737 C

Med: an.20, al.30



ref. 738

Med: an.34, al.44



ref. 738 A

Med: an.30, al.40

ref. 738 B

Med: an.24, al.34

ref. 738 C

Med: an.20, al.30



ref. 739

int Med: an.9,5, al.13,5
ext Med: an.13, al.17



ref. 740

int Med: an.13, al.18
ext Med: an.18, al.26



ref. 741

int Med: an.9, al.13
ext Med: an.13, al.18



ref. 742

int Med: an.13, al.18
ext Med: an.20, al.25



ref. 743

int Med: an.5, al.8
ext Med: an.10, al.15



ref. 744

int Med: an.6, al.9
ext Med: an.10, al.15



ref. 745

int Med: an.12, al.9
ext Med: an.16, al.15



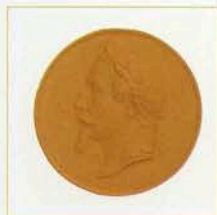
ref. 746

int Med: an.13, al.18
ext Med: an.18, al.25



ref. 747

int Med: an.18, al.13
ext Med: an.20, al.18



ref. 748

Med: ø 18



ref. 749

Med: ø 18



ref. 750

Med: an.6, al.13



ref. 750 A

Med: an.6, al.13



ref. 751

Med: an.9,5, al.13



ref. 752

Med: an.6, al.13



ref. 752 A

Med: an.6, al.13



ref. 753

Med: an.9,5, al.13



ref. 754

Med: an.10, al.23



ref. 754 A

Med: an.10, al.23



ref. 755

Med: an.17, al.24



ref. 756

Med: an.24,5, al.33



ref. 757

Med: an.14, al.33,5



ref. 757 A

Med: an.14, al.33,5



ref. 758

Med: an.15, al.38,5



ref. 759

Med: an.14,5, al.12



ref. 760

Med: an.14,5, al.12



ref. 761

Med: an.29, al.24



ref. 762

Med: an.29, al.24



ref. 763

Med: an.29, al.24



ref. 764

Med: an.25, al.29,5



ref. 765

Med: an.29, al.24



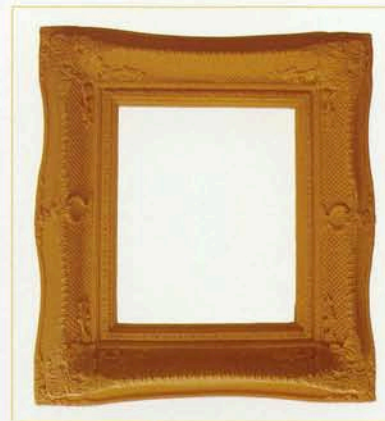
ref. 766

Med: an.29, al.24



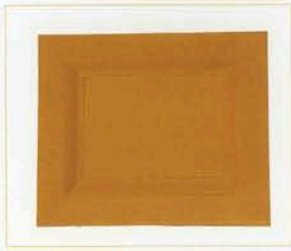
ref. 767

Med: an.29, al.24



ref. 768

int Med: an.27, al.32
ext Med: an.44, al.49



ref. 772

Med: an.22,5, al.19



ref. 769

int Med: an.22, al.27
ext Med: an.40, al.45



ref. 770

int Med: an.15, al.20
ext Med: an.40, al.45



ref. 771

int Med: an.26, al.32
ext Med: an.42, al.47



ref. 773

Med: an.19, al.53



ref. 774

Med: an.24,5, al.59



ref. 775

int Med: an.21, al.26
ext Med: an.27, al.41



ref. 776

int Med: an.13, al.18
ext Med: an.18, al.28



ref. 777

int Med: an.11, al.16
ext Med: an.15, al.24



ref. 778

int	Med: an.21, al.26
ext	Med: an.30, al.37



ref. 779

int	Med: an.13, al.18
ext	Med: an.20, al.26



ref. 780

int	Med: an.18, al.22
ext	Med: an.17, al.22,5



ref. 784

int	Med: an.30, al.46
ext	Med: an.39, al.56



ref. 782

int	Med: an.45, al.36
ext	Med: an.50, al.52



ref. 781

Med: an.38, al.20
base: 37 x 15



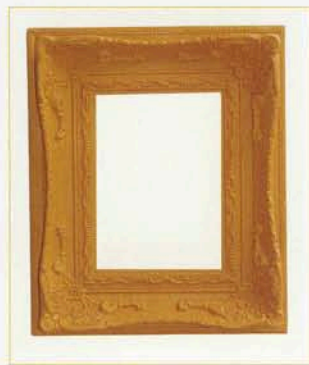
ref. 783

Med: an.45, al.21
base: 43 x 13



ref. 785

int	Med: an.19, al.24
ext	Med: an.29, al.33



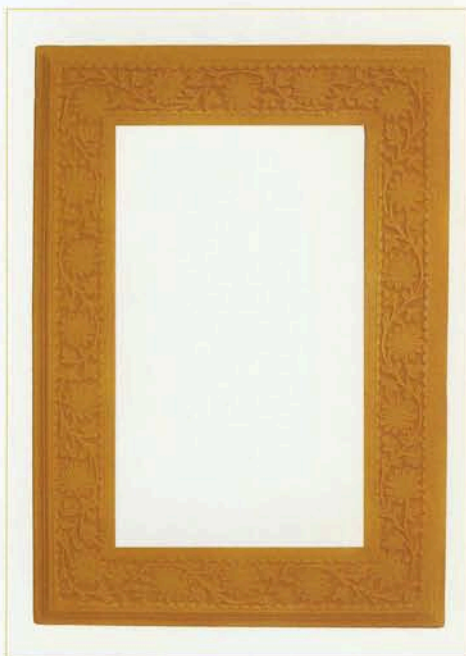
ref. 786

int	Med: an.15, al.20
ext	Med: an.24, al.29



ref. 787

int	Med: an.31, al.39
ext	Med: an.44, al.53



ref. 789

int	Med: an.25, al.40
ext	Med: an.38, al.54



ref. 788

Med: al.51
base: ø 15



ref. 790

Med: al.40
base: ø 15



ref. 791

int	Med: an.8, al.10
ext	Med: an.19, al.21



ref. 792

int	Med: an.10, al.12
ext	Med: an.17, al.20



ref. 793

int	Med: an.9, al.12
ext	Med: an.20, al.23



ref. 794

int Med: an.9, al.12,5
ext Med: an.12,5, al.16,5



ref. 795

int Med: an.13, al.18
ext Med: an.17, al.22



ref. 796

int Med: an.20, al.25
ext Med: an.26,5 al.33



ref. 797

int Med: an.15, al.20
ext Med: an.20, al.25



ref. 798

int Med: an.13, al.18
ext Med: an.17,5, al.22,5



ref. 799

int Med: an.9, al.13
ext Med: an.12,5 al.16,5



ref. 900

int Med: an.15, al.20
ext Med: an.20, al.24,5



ref. 901

int Med: an.13, al.18
ext Med: an.17,5, al.22,5



ref. 902

int Med: an.9, al.13
ext Med: an.13, al.17



ref. 903

Med: an.12, al.15



ref. 904

Med: an.12, al.15



ref. 905

Med: an.12, al.15



ref. 906

Med: an.12, al.15



ref. 907

Med: an.17, al.13



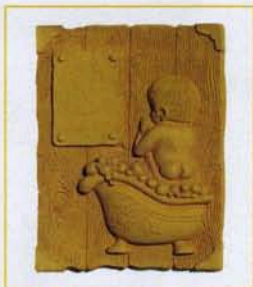
ref. 908

Med: an.15, al.16



ref. 909

Med: an.14, al.16



ref. 910

Med: an.13, al.17



ref. 911

Med: an.13, al.17



ref. 912

Med: an.16,5, al.11,5



ref. 913

Med: an.18, al.19



ref. 914

Med: an.20, al.20



ref. 915

Med: an.16, al.18



ref. 916

Med: an.12,5 al.10



ref. 917

Med: an.10, al.10



ref. 918

Med: an.8,5, al.12,5



ref. 919

Med: an.21, al.16



ref. 920

Med: an.21,5, al.17



ref. 921

Med: an.20, al.15

ref. 919 P

CON 2 POMOS

ref. 920 P

CON 2 POMOS

ref. 921 P

CON 2 POMOS



ref. 922

Med: an.57, al.15



ref. 924

Med: an.39, al.17



ref. 923

Med: an.16, al.35,5



ref. 925

Med: an.20, al.49



ref. 926

Med: an.20,5, al.62,5



ref. 927

Med: an.40, al.40



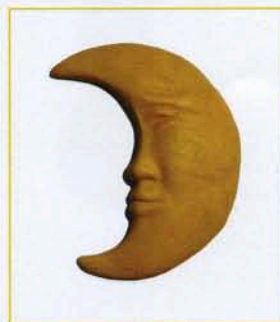
ref. 930

Med: an.11, al.11



ref. 928

Med: an.25, al.25



ref. 929

Med: an.17, al.21



ref. 931

Med: an.10, al.12



ref. 932

Med: an.15, al.15



ref. 933

Med: an.13, al.13



ref. 934

Med: an.6, al.8,5



ref. 935

Med: an.28,5, al.24
base: 28,5 x 17,5



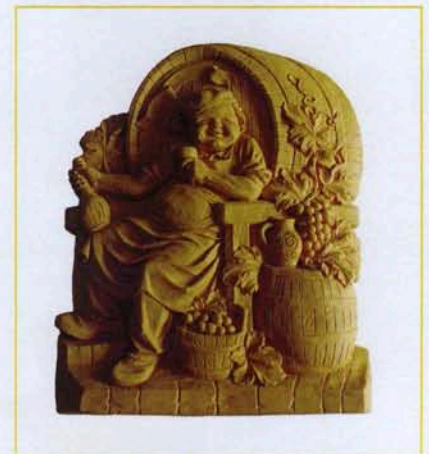
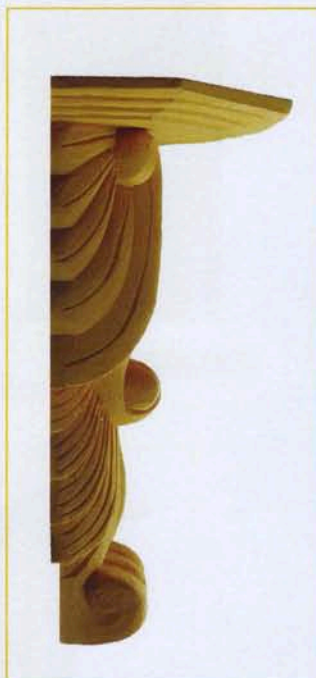
ref. 937

Med: an.10 al.20
base: 10 x 9



ref. 936

Med: an.35,5, al.45,5
base: 35,5 x 19



ref. 938

Med: an.23, al.30



ref. 998

Med: an. 92 al. 46
gro. 7



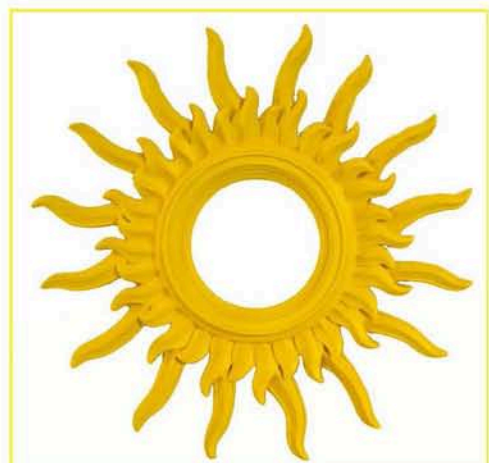
ref. 999

Med: an. 69 al 59
gro. 3



ref. 997

Med: an. 57 al.47
gro. 5



ref. 995

Med. Ø ext. 64
int. 21 X 21
gro. 5



ref. 996

Med. an. 54 al. 33
gro. 4



ref. 940

Med. al. 48 an. 16
gro. 3

ref. 939

Med. al. 42 an.13
gro. 3



ref. 941

Med. al. 45 an. 14
gro. 7



ref. 1001

int Med: an.48, al.62
ext Med: an.62, al.93



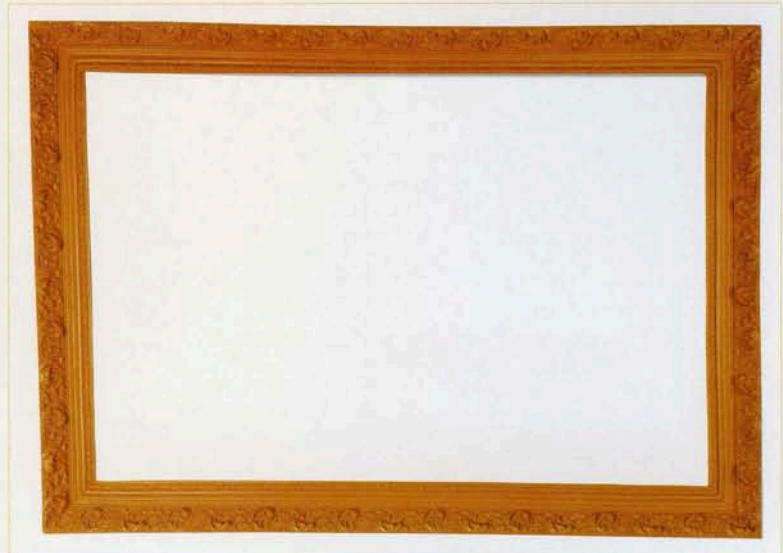
ref. 1002

int Med: an.75, al.60
ext Med: an.87,5, al.72



ref. 1004

int Med: an.58, al.72
ext Med: an.67, al.81



ref. 1022

int Med: an.47, al.61,5
ext Med: an.,55,5, al.70

ref. 1008

int Med: an.104, al.71
ext Med: an.117, al.84



ref. 1017

int Med: an.51, al.60,5
ext Med: an.66, al.76



ref. 1018

int Med: an.41,5, al.31
ext Med: an.55, al.47



ref. 1019

int Med: an.25, al.31,5
ext Med: an.39, al.45



ref. 1023

int Med: an.62, al.47
ext Med: an.75, al.57



ref. 1024

int Med: an.48, al.75,5
ext Med: an.58,5, al.100



ref. 1031

int Med: an.23, al.28
ext Med: an.30, al.36



ref. 1035

int Med: an.40, al.50,5
ext Med: an.54, al.64



ref. 1041

int Med: an.22,5, al.16,5
ext Med: an.28, al.22



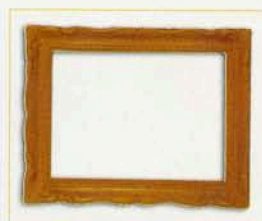
ref. 1045

int Med: an.19,5, al.25
ext Med: an.23, al.29



ref. 1042

int Med: an.22, al.16
ext Med: an.28, al.21,5



ref. 1043

int Med: an.18, al.13
ext Med: an.21, al.16,5



ref. 1044

int Med: an.17, al.13
ext Med: an.25, al.20



ref. 1046

int Med: an.12, al.15,5
ext Med: an.19, al.22,5



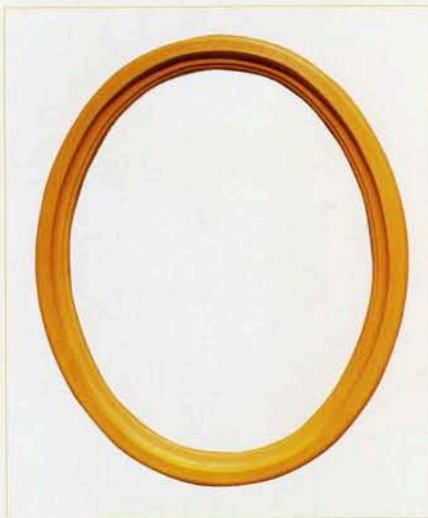
ref. 1047

int Med: an.20, al.30
ext Med: an.25,5, al.35,5



ref. 1048

int Med: an.20, al.27
ext Med: an.36, al.52



ref. 1049

int Med: an.42, al.52
ext Med: an.49, al.59



ref. 1050

int Med: an.44, al.24
ext Med: an.66, al.54



ref. 1051

int Med: an.7,5, al.9
ext Med: an.9, al.13



ref. 1052

int Med: an.7, al.10
ext Med: an.10, al.13,5



ref. 1056

int Med: an.28, al.38
ext Med: an.44, al.54



ref. 1054

int Med: an.14, al.19,5
ext Med: an.19, al.30



ref. 1055

int Med: an.12, al.17
ext Med: an.22, al.29



ref. 1058

int Med: an.48, al.60
ext Med: an.70, al.80



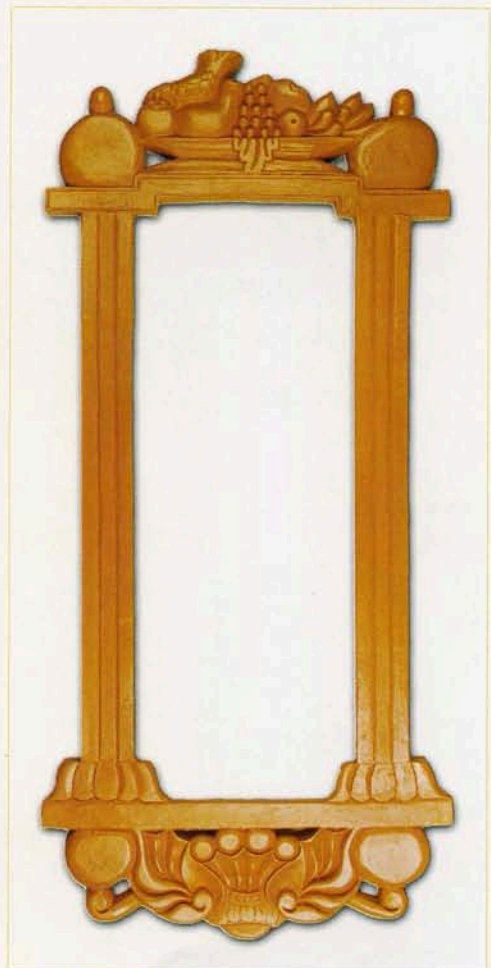
ref. 1059

int Med: an.30, al.44
ext Med: an.51, al.79



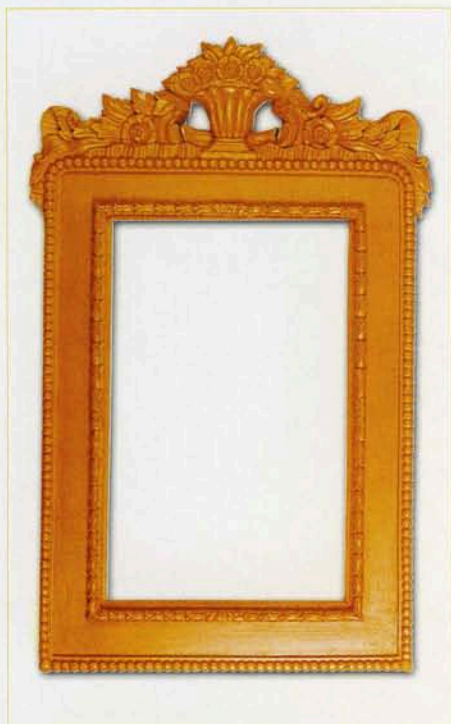
ref. 1060

int Med: an.52, al.72
ext Med: an.72, al.113



ref. 1062

int Med: an.42, al.103
ext Med: an.68, al.146



ref. 1061

int Med: an.46, al.70
ext Med: an.68, al.110



ref. 1063

int Med: an.30, al.40
ext Med: an.50, al.60

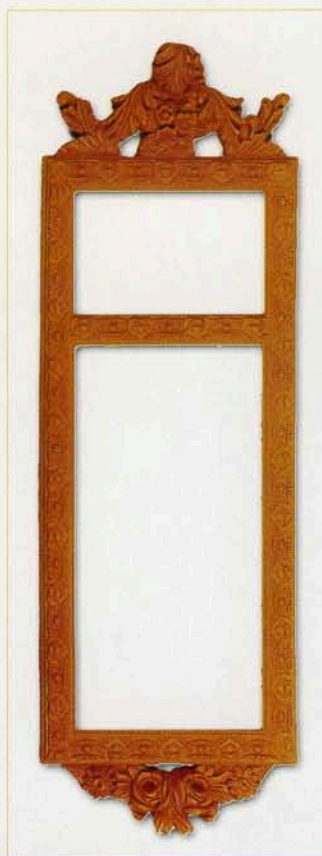
ref. 1071

int Med: an.50, al.70
ext Med: an.70, al.90



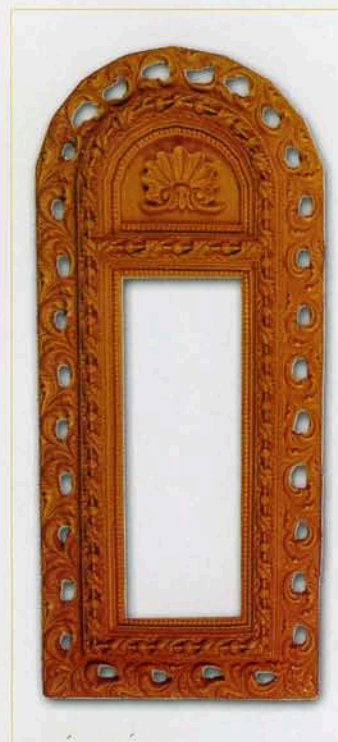
ref. 1064

int.inf Med: an.24, al.49
int.sup Med: an.24, al.13
ext Med: an.35, al.97



ref. 1065

int.inf Med: an.26,5, al.51,5
int.sup Med: an.26,5, al.18
ext Med: an.33, al.100



ref. 1066

int Med: an.18, al.47
ext Med: an.36,5, al.86



ref. 1067

int Med: an.40, al.30
ext Med: an.55, al.64



ref. 1068

int Med: an.50, al.60
ext Med: an.78, al.95



ref. 1069

int Med: an.50, al.70
ext Med: an.75, al.110



ref. 1070

int Med: an.50, al.60
ext Med: an.70, al.80

Sistemas de poliuretano

CUADROS 01 DE 03



3209

75 X 48 cm.



3210

75 X 48 cm.

3142

44 X 53 cm.

3143

44 X 53 cm.



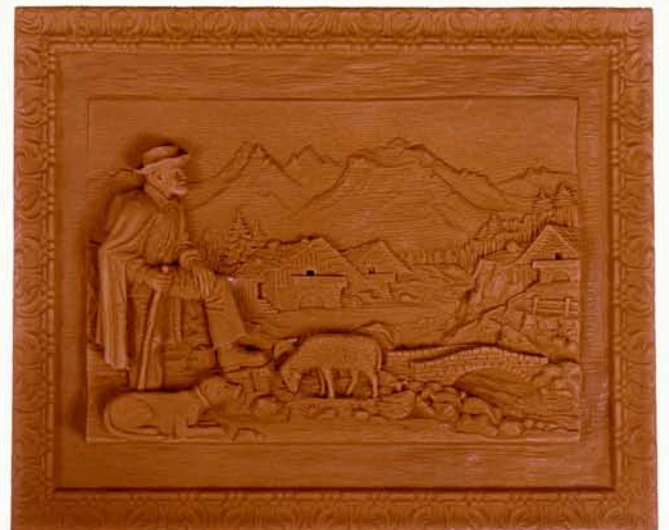
3144

44 x 53 cm.



3145

44 X 53 cm.





3148 54 X 44 cm.



3149 54 X 44 cm.

3433
29.5 X 34.5 cm.



3434
29.5 X 34.5 cm.



3435
29.5 X 34.5 cm.



3437 29.5 X 34.5 cm.



3438 29.5 X 34.5 cm.



3436 29.5 X 34.5 cm.



3198 60 X 46 cm.



3176 30 X 28 cm.



3199 60 X 46 cm.



3177 30 X 28 cm.



3431
39.5 X 39.5 cm.

3432
39.5 X 39.5 cm.



Sistemas de poliuretano

DINTELES 01 DE 01

3030

15 X 60 cm.



3234

18 X 75 cm.



3461

49 X 13 cm.



3466

105 X 22 cm.



3462

78 X 15 cm.



3467

75 X 24 cm.



3468

73 X 26 cm.



3134

83 X 24 cm.



3326

95 X 28.5 cm.



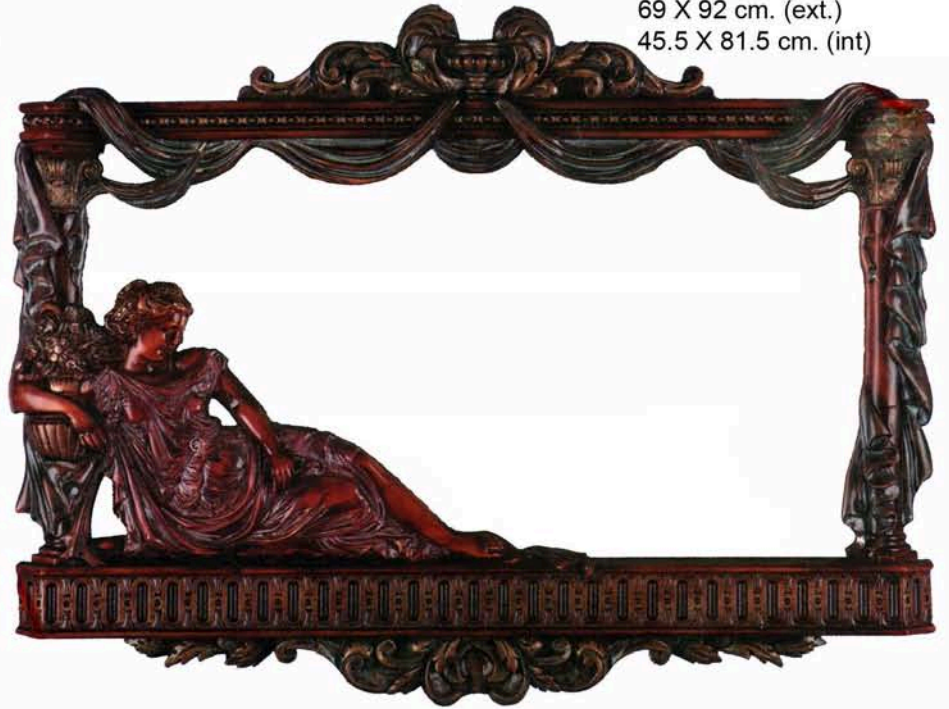
3246

70 X 37 cm. (ext)
55 X 25 cm. (int.)



3422

69 X 92 cm. (ext.)
45.5 X 81.5 cm. (int)



3251

103 X 84 cm. (ext)
82 X 62 cm. (int)





3320

93 X 32.5 cm.



3239

78 X 68 cm. (ext.)
61 X 51 cm. (int.)

3521

72 X 34.5 cm (ext.)
57.5 X 20 cm. (int.)



3507

23 X 18.5 cm. (ext.)
15.5 X 11 cm. (int.)



33 X 32.5 cm. (ext)
19 X 25 cm. (int.)

3499

Sistemas de poliuretano

MARCOS 03 DE 05

3240

67 X 57 cm. (ext.)
51 X 41 cm. (int.)



3255

86 X 65 cm. (ext.)
71 X 50 cm. (int.)



3241

57 X 47 cm. (ext.)
40 X 30 cm. (int.)



3107

50 X 39 cm. (ext.)
38 X 28 cm. (int.)



3109

35 X 30 cm. (ext.)
23 X 17 cm. (int.)





3554

60 X 60 cm. (ext.)
18 X 18 cm. (int.)

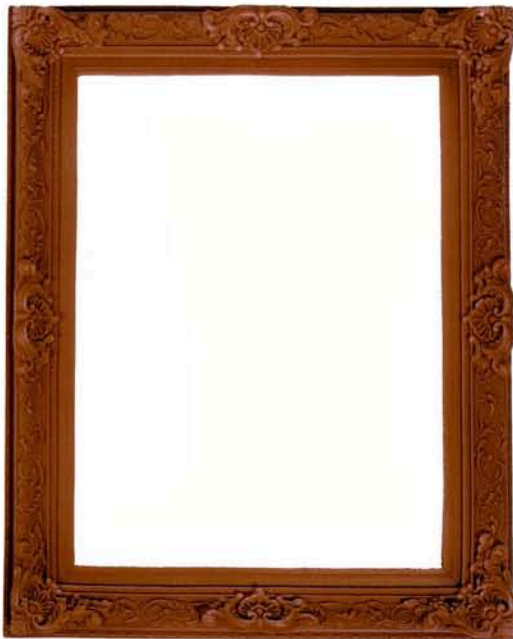
ARTESANIAS MONGAR

MARCOS 04 DE 05



3427

49 X 33 cm (ext.)
26 X 21 cm. (int.)



3208

51 X 41 cm. (ext.)
42 X 32 cm. (int.)



3265

53 X 43 cm. (ext.)
41 X 31 cm. (int.)



3207

49 X 39 cm. (ext)
40 X 30 cm (int.)

Sistemas de poliuretano

MARCOS 05 DE 05

3306

67 X 39 cm. (ext.)



MENSULAS 01 DE 01

3315

38 X 26 X 20 cm.



3316

38 X 26 X 20 cm.



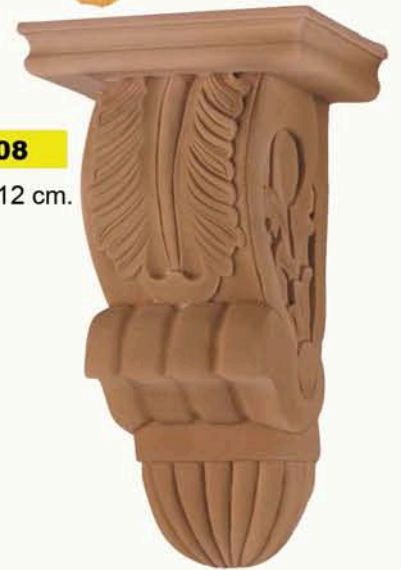
3053

17 X 19 X 12 cm.



3508

29 X 17 X 12 cm.



3445

26 X 17 X 12 cm.



3447

43 X 29 X 18 cm.



3446

28 X 23 X 15.5 cm.

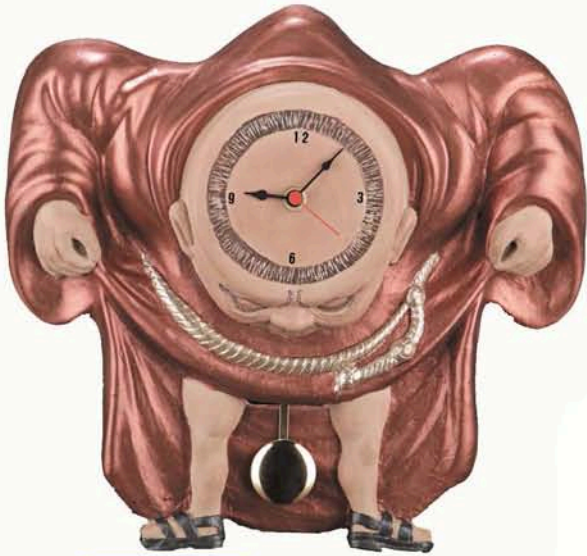


3444

21 X 25 X 12 cm.



PERCHAS 01 DE 03



3524 31 X 33 cm.



3528
37 X 37 cm. (ext.)
30 cm. Ø (int.)

3526
31 x 52 cm.



3183
40 X 39 cm. (2 pomos o sin pomos)



3298
39 X 48 cm. (3 pomos o sin pomos)

3525
37 X 58 cm. (ext.)
27.3 cm. Ø (int.)





3292 38 X 46 cm.
3 pomos (o sin pomos)



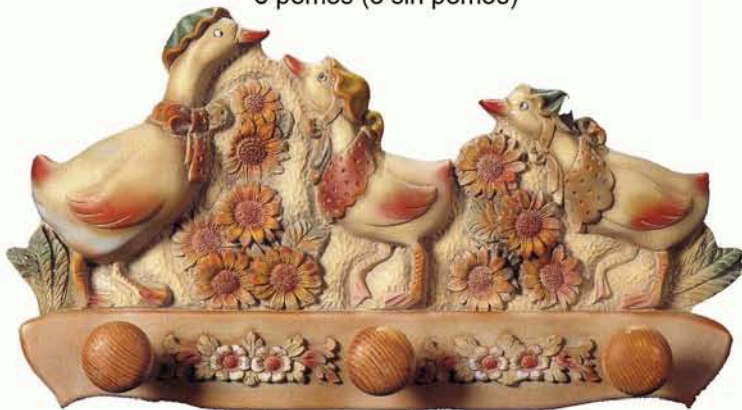
3293 44 X 47 cm.
3 pomos (o sin pomos)



3294 36 X 55 cm.
3 pomos (o sin pomos)



3351
40 X 26 cm.
3 pomos (o sin pomos)



3299 23 X 41 cm.
3 pomos (o sin pomos)



3302
14 X 24 cm.
3 pomos



3290
33 X 50 cm.
3 pomos (o sin pomos)



3291 30 X 46 cm.
3 pomos (o sin pomos)

3284

30 X 40 cm.



3286

31 X 41 cm.



3285

31 X 37 cm.



3352

3 pomos (o sin pomos)

42 X 27 cm.



3353

3 pomos (o sin pomos)

43 X 30 cm.



3354

50 X 34 cm.

3 pomos (o sin pomos)



3428

41 X 23 cm.



3429

41 X 23 cm.



3493

56 X 40 cm.



3430

41 X 23 cm.



3230

32 X 16 cm.



3231

32 X 16 cm.



3226

30 X 18 cm.



3191

29 X 21 cm.



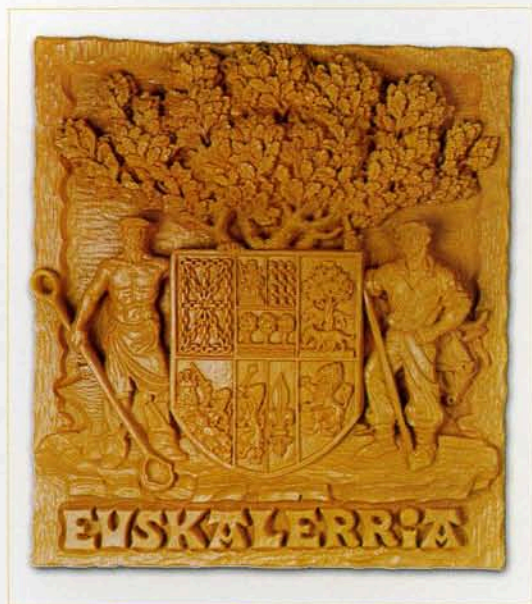
3308

24 X 24 cm.



3309

24 X 24 cm.



ref. 800

Med: an.53, al.60



ref. 816

Med: ø18



ref. 817

Med: ø16



ref. 820

Med: an.7, al.9
Med: an.10, al.16



ref. 821

Med: an.5,5, al.8



ref. 822

Med: an.29, al.36



ref. 823

Med: ø 37



ref. 824

Med: ø 37



ref. 826 A

Med: an.34, al.15



ref. 826 B

Med: an.34, al.15



ref. 826 C

Med: an.34, al.15



ref. 826 D

Med: an.40, al.25



ref. 825

Med: ø 37



ref. 802

Med: an.13, al.32



ref. 803

Med: an.13, al.32



ref. 804

Med: an.13, al.32



ref. 805

Med: an.13, al.32



ref. 806

Med: an.13, al.32



ref. 808

Med: an.13, al.32



ref. 815

ext Med: an.12 al.47
fondo Med: 10



ref. 822

Med: an.29, al.36



ref. 829

Med: an.43, al.65



ref. 830

Med: an.13, al.32



ref. 831

Med: an.13, al.32



ref. 832

Med: an.13, al.32



ref. 833

Med: an.13, al.32



ref. 834

Med: an.13, al.32



ref. 835

Med: an.13, al.32



ref. 836

Med: an.13, al.32



ref. 837

Med: an.13, al.32



ref. 827 A

Med: an.40, al.25



ref. 827 B

Med: an.40, al.25



ref. 827 C

Med: an.40, al.25



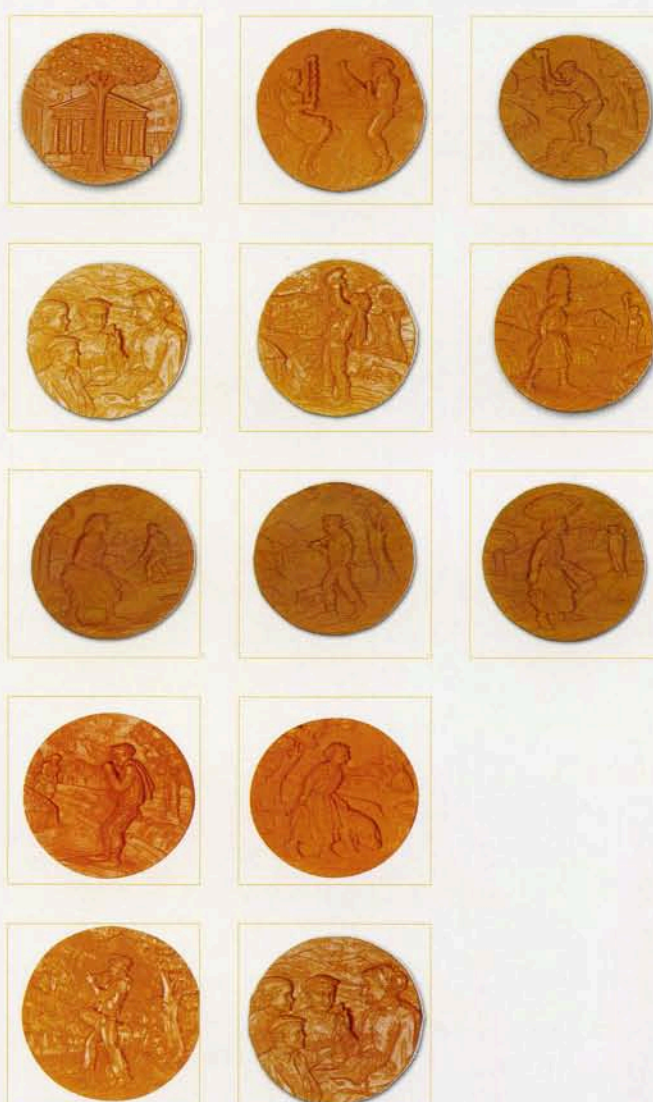
ref. 827 D

Med: an.40, al.25



ref. 827 E

Med: an.40, al.25



ref. 828

13 TEMAS

Med: ø 18



ref. 838

Med: ø 37



artesanías
MONGAR S.L.

Carretera de Tricio, s/n.
26300 - NÁJERA - La Rioja
Tfno. y Fax: 941 360 814